

QUICKPANEL FAMILY

FEATURES

Communicates with over 70 PLCs and communication networks including Allen-Bradley Remote I/O, Data Highway Plus and DeviceNet, GE Genius I/O and Modicon Modbus Plus and Profibus

All Models programmed by the same award winning QuickDesigner software

A size and display type for every budget

Standard NEMA 4X/12

UL, CUL, Class 1 Division 2 and CE approvals

Keypads available

2-year warranty



DESCRIPTION

The QuickPanel family of touchscreen operator interfaces is a practical and cost effective replacement for a variety of discrete devices, from push buttons and pilot lights to message centers. Free form static and dynamic graphics can be added to present an information-rich picture to the operator in a single glance. Several screen technologies and sizes provide bold, clear displays in color or monochrome. Each unit communicates with all major PLCs and PLC networks including A-B Remote I/O, Data Highway Plus, GE Genius I/O and Modbus Plus. The industrially designed QuickPanel is rated NEMA 12/4x, IP65. Best of all, its simple yet versatile design will increase your productivity at a lower installed cost.

All QuickPanel models share the same user friendly, Win-

dows-based graphic editor, QuickDesigner. It offers a comprehensive set of panel operations, including: push buttons, selector switches, pilot lights, trend displays, text and numeric data displays, bar-graph displays, static and dynamic bitmaps or object oriented images and more. Each of these operations function as naturally as their discrete counterpart -- push buttons toggle on and off at a touch, pilot lights glow to indicate active status, and so forth. Despite its impressive array of features, QuickDesigner is easy to use. Creating a control panel is as simple as dragging an object from the toolbox, positioning it on the panel and filling in specifications such as text label, color and PLC address. We promise that you will be configuring applications within 10 minutes or we will give your money back!

QUICKPANEL JR.

QuickPanel jr. 5" and 6" STN Color and Monochrome LCD

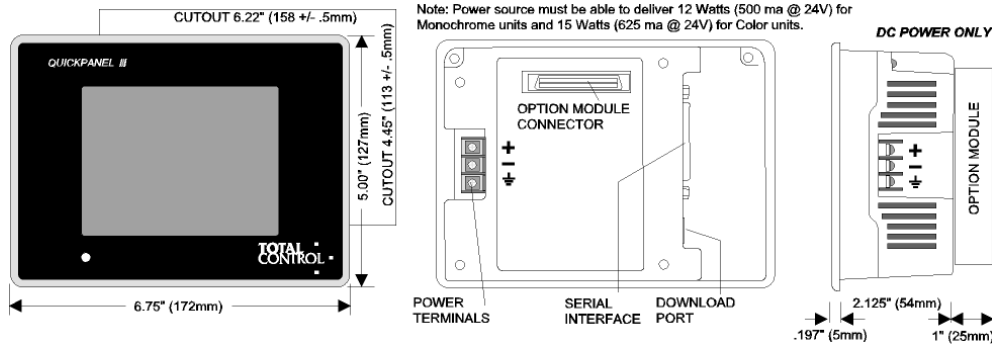
DESCRIPTION

The QuickPanel jr. is a practical and cost effective replacement for a variety of discrete devices, from push buttons and pilot lights to message centers. Free form static and dynamic graphics can be added to present an information-rich picture to the operator in a single glance. Despite its small size, the QuickPanel's 5" or 6" diagonal screen with 320W x 240H pixel format provides a sharp display in color or monochrome. Each unit communicates with all

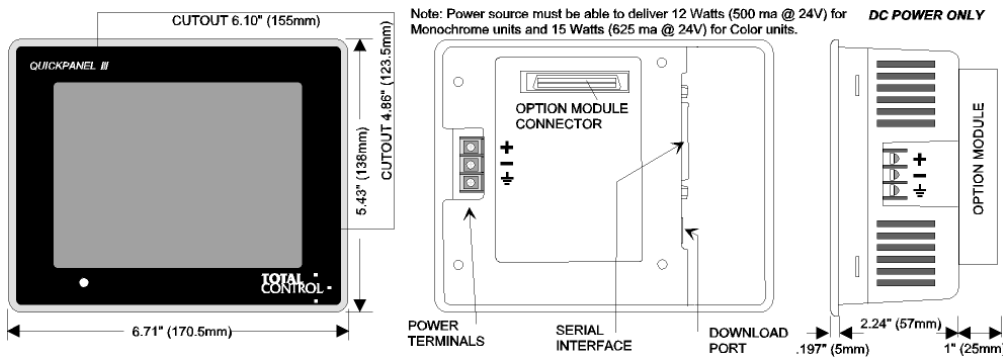
major PLCs and communication networks including A-B Remote I/O, Data Highway Plus, DeviceNet, Modicon Modbus Plus, Profibus and GE Genius (some require an optional, field-installed module). The industrially designed QuickPanel is rated NEMA 12/4x. Best of all, its simple yet versatile design will increase your productivity at a lower installed cost.

DIMENSIONS

5" Monochrome LCD & Color STN

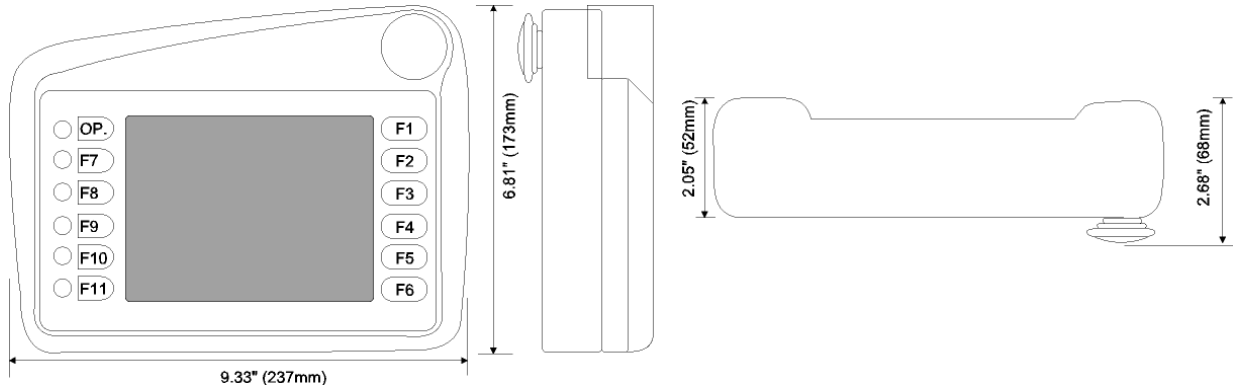


6" Monochrome LCD & Color STN

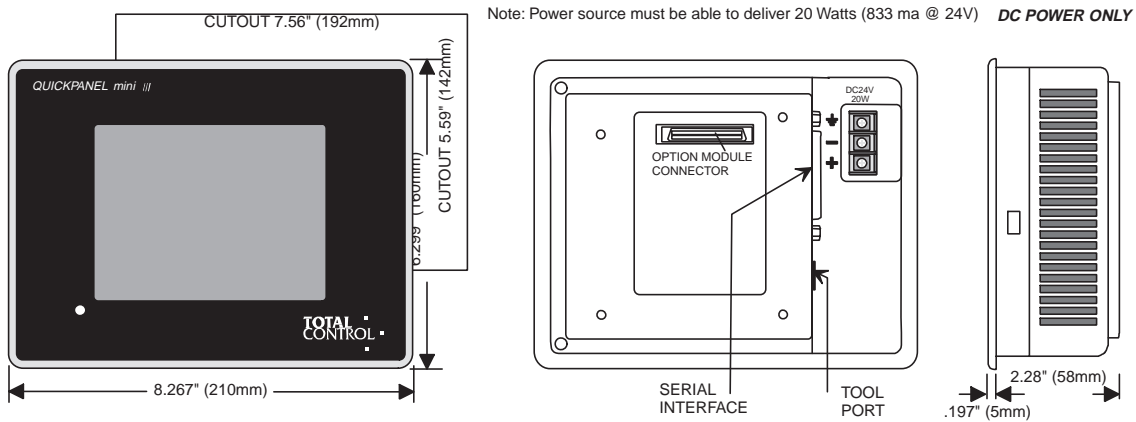


QUICKPANEL JR.

6" Hand Held QuickPanel Monochrome & Color STN



6" QuickPanel Mini Monochrome



QUICKPANEL JR.

SPECIFICATIONS

	5" LCD Mono QPJ-2D100-L2P	5" STN Color QPJ-2D100-S2P	6" LCD Mono QPK-2D100-L2P	6" STN Color QPK-2D100-S2P
Electrical				
Operating Voltage	20.4 to 27.6 VDC	20.4 to 27.6 VDC	20.4 to 27.6 VDC	20.4 to 27.6 VDC
Power Consumption	12 Watts Max	12 Watts Max	15 Watts Max	15 Watts Max
Power Failure Immunity	20 ms. Max	20 ms. Max	20 ms. Max	20 ms. Max
Withstand Voltage	1500 VAC (10 ma Max., 1 Min.)	1500 VAC (10 ma Max., 1 Min.)	1500 VAC (10 ma Max., 1 Min.)	1500 VAC (10 ma Max., 1 Min.)
Insulation	10 M (@ 500 VDC	10 M (@ 500 VDC	10 M (@ 500 VDC	10 M (@ 500 VDC
Noise Immunity	1000 V(p-p) 1µs pulse	1000 V(p-p) 1µs pulse	1000 V(p-p) 1µs pulse	1000 V(p-p) 1µs pulse
Environmental				
Operating Temperature	0 to 50° C	0 to 45° C	0 to 50° C	0 to 45° C
Storage Temperature	-20 to 60° C	-20 to 60° C	-20 to 60° C	-20 to 60° C
Operating Humidity	20 to 85% RH Non-Condensing	20 to 85% RH Non-Condensing	20 to 85% RH Non-Condensing	20 to 85% RH Non-Condensing
Storage Humidity	5 to 85% RH Non-Condensing	5 to 85% RH Non-Condensing	5 to 85% RH Non-Condensing	5 to 85% RH Non-Condensing
Vibration	10 to 25 Hz, 2G on each of X, Y, Z 30 min.	10 to 25 Hz, 2G on each of X, Y, Z 30 min.	10 to 25 Hz, 2G on each of X, Y, Z 30 min.	10 to 25 Hz, 2G on each of X, Y, Z 30min.
Mechanical				
Dimensions	5.0" H x 6.75" W x 2.125" D	5.0" H x 6.75" W x 2.125" D	5.43"Hx6.71"W x 3.437" D	5.43"Hx6.71"Wx 3.437" D
Weight	1.5 lbs.	1.5 lbs.	1.5 lbs.	1.5 lbs.
Cooling	Natural Air Convection	Natural Air Convection	Natural Air Convection	Natural Air Convection
Installation	Front Mount	Front Mount	Front Mount	Front Mount
Display				
Display Type	LCD	STN LCD	LCD	STN LCD
Pixel Resolution	240 H x 320 W	240 H x 320 W	240 H x 320 W	240 H x 320 W
Colors	White/Grey + Flash	8 Solid + 8 Flash	White/Grey + Flash	8 Solid + 8 Flash
Viewing Area	4"W X 3"H 5" Diagonal	4"W X 3"H 5" Diagonal	5"W X 4"H "6" Diagonal	5"W X 4"H 6" Diagonal
Touch Panel				
Resolution	15 W x 11 H	15 W x 11 H	15 W x 11 H	15 W x 11 H
External Interface				
Serial Port (SIO)	Yes	Yes	Yes	Yes
Download Port	Yes	Yes	Yes	Yes
Optional Interfaces				
A-B Remote I/O	QPJ-ABR-201	QPJ-ABR-201	QPJ-ABR-201	QPJ-ABR-201
A-B DH Plus	QPJ-ABD-201	QPJ-ABD-201	QPJ-ABD-201	QPJ-ABD-201
Modbus Plus	QPJ-MBP-201	QPJ-MBP-201	QPJ-MBP-201	QPJ-MBP-201
Genius I/O	QPJ-GEG-201	QPJ-GEG-201	QPJ-GEG-201	QPJ-GEG-201
Profibus	QPJ-PBS-201	QPJ-PBS-201	QPJ-PBS-201	QPJ-PBS-201
DeviceNet	QPJ-DVN-202	QPJ-DVN-202	QPJ-DVN-202	QPJ-DVN-202
Interbus-S	QPJ-IBS-201	QPJ-IBS-201	QPJ-IBS-201	QPJ-IBS-201

QUICKPANEL JR.

QPH Specifications	
Power Supply	20.4-27.6 VDC, 12W max (typ 10W)
Display	6" Passive STN Color, 5" W x 4" H x 6.4" diagonal viewing area
Touch Screen	Analog resistive, 15 W x 11 H resolution
Resolution	240 x 320 pixels, 8 Solid colors, 8 Flashing colors
Temperature	Operating: 0-40°C, -20-60°C storage
Humidity	20-85% non-condensing
Shock	10-25Hz (2G on each of X, Y, Z 30 min.)
Dimensions	9.33" W x 6.81" H x 2.68" D (237mmW x 173mmH x 68mmD)
Weight	1.9lbs (870g)
Rating	IP63, NEMA1
Software	Quick Designer Advanced (3.1 or later)

QPM Specifications	
Power Supply	20.4-27.6 VDC, 12W max
Display	6" diagonal monochrome LCD with flourescent backlight
Touch Screen	Analog resistive
Resolution	240 x 320 pixels
Temperature	Operating: 0-50°C
Humidity	30-85% non-condensing
Dimensions	8.267" W x 6.299" H x 2.28" D (210mm W x 160mm H x 58mm D)
Weight	1.65lbs
Memory	5 Panels
Rating	NEMA12/4x self-certified, CE and UL 1950 Approved
Software	Quick Designer (3.32 or later, c/w reduced feature set for QUICKPANEL Mini - see illustration at right)



QUICKPANEL JR.

ACCESSORIES

Catalog Number	Description
HMI-AGO-203	Anti-glare overlay for 5" or 6" Color or Mono QPJ-2xxxx-xxx
HMI-AGO-204	Anti-glare overlay for 5" or 6" Color or Mono QPK-2xxxx-xxx
HMI-BEZ-201	Stainless Steel NEMA 4X Bezel for 5" Color or Mono QPJ-2xxxx-xxx
HMI-BEZ-204	Stainless Steel NEMA 4X Bezel for 6" Color or Mono QPK-2xxxx-xxx
HMI-COV-203	Front sheet cover for 5" Color or Mono QPJ-2xxxx-xxx (20 per pack)
HMI-COV-204	Front sheet cover for 6" Color or Mono QPK-2xxxx-xxx (20 per pack)
HMI-CCT-202	Replacement Cold Cathode Backlight Tube for 5" Color or Mono QPJ-2xxxx-xxx
HMI-CCT-203	Replacement Cold Cathode Backlight Tube for 6" Color or Mono QPK-2xxxx-xxx
510-1000-004	24 VDC, 1.3Amp power supply, enclosed design for desktop or panel mounting, with on/off switch (for 5" or 6" Color or Mono QPJ-2xxxx-xxx or QPK-2xxxx-xxx, and Quickpanel Mini).

HOW TO ORDER

QUICKPANEL jr. Unit ¹

Catalog Number	Description
QPJ-2D100-L2P	5" Monochrome LCD for standard serial PLC drivers, 24VDC ^{UL}
QPJ-2D100-S2P	5" STN Color LCD for standard serial PLC drivers, 24VDC ^{UL}
QPK-2D100-L2P	6" Monochrome LCD for standard serial PLC drivers, 24VDC ^{UL}
QPK-2D100-S2P	6" STN Color LCD for standard serial PLC drivers, 24VDC ^{UL}

QUICKPANEL jr. Communication Modules (for all QPJ and QPK units) ²

Catalog Number	Description
QPJ-ABD-201	A-B Data Highway Plus interface module ^{UL}
QPJ-ABR-201	A-B 1771 Remote I/O interface module ^{UL}
QPJ-GEG-201	General Electric Genius I/O interface module ^{UL}
QPJ-MBP-201	Modicon Modbus Plus interface module ^{UL}
QPJ-PBS-201	Profibus interface module
QPJ-DVN-202	DeviceNet interface module
QPJ-IBS-201	Interbus-S interface module

QUICKSTART jr. Everything you need for your first project!

A color or monochrome 5" or 6" QuickPanel jr.	PLC cables included:
QuickDesigner for Windows™ off-line editor ³	HMI-CAB-C53
Full Documentation	HMI-CAB-C58
Download Cable	HMI-CAB-C82
24 VDC Power Supply, 1.3 Amp	HMI-CAB-C83

Catalog Number	Description
QJ-2D100-L2P	5" Monochrome LCD for standard serial PLC drivers, 24VDC ^{UL}
QJ-2D100-S2P	5" STN Color LCD for standard serial PLC drivers, 24VDC ^{UL}
QSK-2D100-L2P	6" Monochrome LCD for standard serial PLC drivers, 24VDC ^{UL}
QSK-2D100-S2P	6" STN Color LCD for standard serial PLC drivers, 24VDC ^{UL}

The trademarks contained herein are the exclusive property of their respective owners.

¹ All monochrome and color models on this and subsequent pages are subject to schedules L and L1 respectively.

² All communications modules on this and subsequent pages are subject to schedule E.

³ For PLC driver availability, refer to the QuickDesigner Software section.

^{UL} UL listed; CUL, UL listed to Canadian Standards; for use in Class I, Group A, B, C, D, Div 2 (UL1604)

CE marked units available upon request. Please consult factory.

QUICKPANEL JR.

Handy QUICKPANEL Unit

Catalog Number	Description
QPH-2D100-L2P	6" Monochrome LCD w/touchscreen, Function keys, E-Stop For standard serial PLC drivers, no comm modules, 24VDC
QPH-2D100-S2P	6" Color STN LCD w/touchscreen, Function keys, E-Stop For standard serial PLC drivers, no comm modules, 24VDC
HMI-CAB-A02	Cable, 24VDC, RS232C and RS422, E-stop, buzzer
HMI-JBX-201	Junction Box. Power, PLC & signal connections
QBH-2D100-L2P	Quick Bundle. Includes 6" Monochrome LCD, A02 cable, power supply, junction box.
QBH-2D100-S2P	Quick Bundle. Includes 6" Color STN LCD, A02 cable, power supply, junction box.

QUICKPANEL Mini

Catalog Number	Description
QPM-2D100-L2P	6" Monochrome LCD w/touchscreen for standard serial PLC drivers, reduced feature set, 24VDC

QUICKPANEL - LARGE UNITS

DESCRIPTION

QUICKPANEL 9" Monochrome EL, 10.5" Color STN, TFT or Monochrome LCD, 12.1" Color TFT

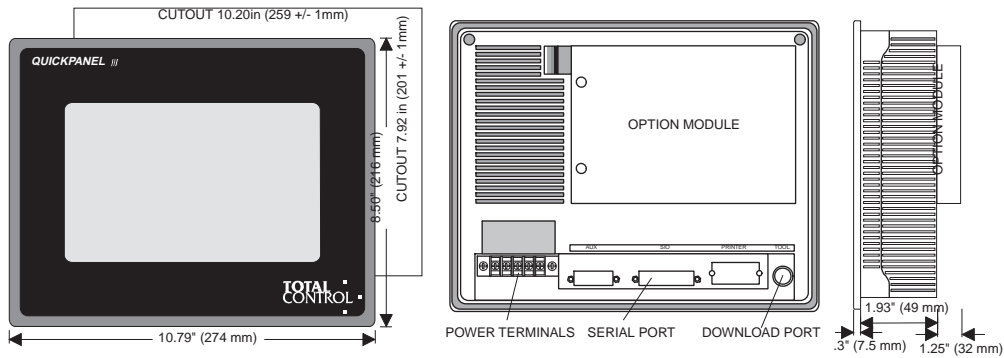
The larger members of the QuickPanel Family are identical to the QuickPanel jr. in every respect except for having about four times as much viewing area. The 12.1" diagonal display has 800 W x 600 H pixels, the 10.5" diagonal display has 640 W x 480 H pixels and the EL has a 9" diagonal screen with a 640 W x 400 H pixel format. Each provides a bold, clear display. Like their smaller counterparts, these are practical and cost effective replacements for a variety of discrete devices, from push buttons and pilot lights to message centers. Free form static and dynamic graphics can be added to present an information-rich picture to the operator in a single glance. Each unit communicates with all major PLCs and PLC networks including A-B Remote I/O, Data Highway Plus, DeviceNet, Modbus Plus, Profibus and GE Genius (some require an optional, field-installed module). All this comes in a slim-line,

compact package. Best of all, its simple yet versatile design will increase your productivity at a lower installed cost.

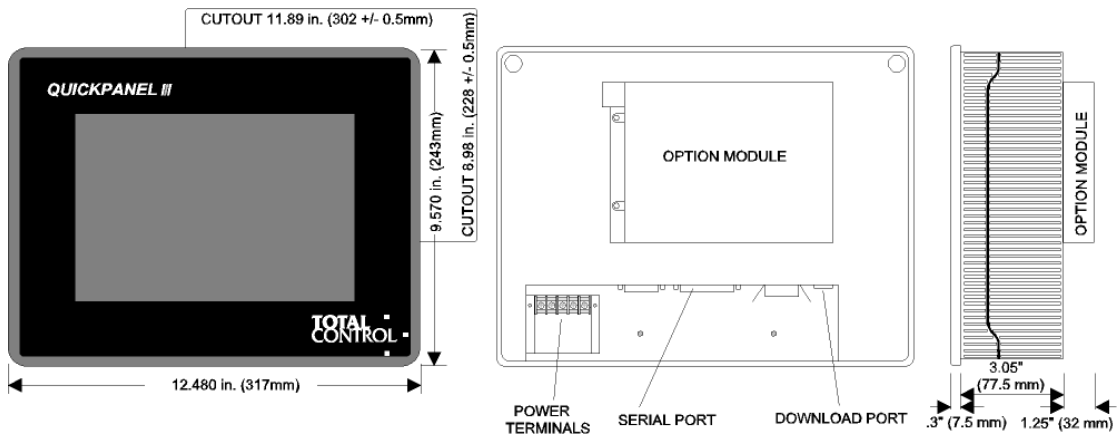
Total Control Products now offers another new technical innovation in industrial process control...the Video QuickPanel. This member of the QuickPanel family provides three channels of video input. Up to four video display objects can appear on a panel. With this dynamic enhancement, your machine process can now be monitored and controlled directly by the machine operator. The QuickPanel Video combines a 10.5", 640 x 480 Color TFT flat panel display with a resistive touch panel into a compact package. The unit is compatible with Quick Designer Advanced Software. All the inputs are software selectable, programmed just like any other QuickPanel operator.

DIMENSIONS

9" Monochrome EL



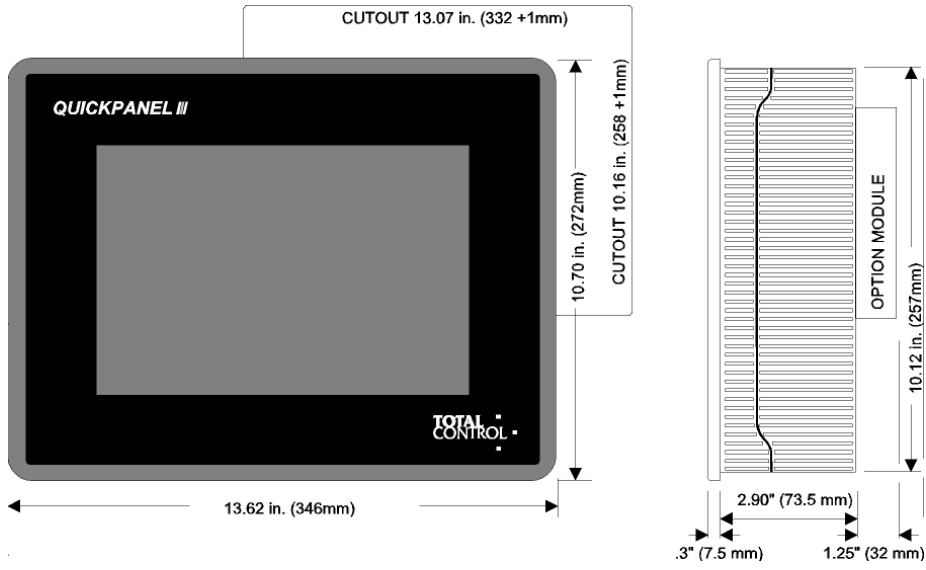
10.5" Monochrome, Color STN & TFT



QUICKPANEL - LARGE UNITS

QUICKPANEL

12.1" Color TFT



QUICKPANEL - LARGE UNITS

SPECIFICATIONS

	9" Electroluminescent QPI-2x100-E2P	10.5" LCD Mono QPI-2D100-L2P	10.5" STN Color QPI-2x100-S2P	10.5" TFT Color QPI-2x100-C2P	12.1" TFT Color QPL-2x100-C2P
Electrical	85 to 132 VAC 20.4-27.6 VDC 50/60Hz	20.4-27.6 VDC 50/60 Hz	85 to 132 VAC 20.4-27.6 VDC 50/60Hz	85 to 132 VAC 20.4-27.6 VDC 50/60Hz	85 to 132 VAC 20.4-27.6 VDC 50/60Hz
Power Consumption	50 VA Max	50 VA Max	50 VA Max	50 VA Max	50 VA Max
Power Failure Immunity	20 ms. Max	20 ms. Max	20 ms. Max	20 ms. Max	20 ms. Max
Withstand Voltage (Min.)	1500 VAC (10 ma Max., 1 Min.)	1500 VAC (20 ma max., 1 min.)	1500 VAC (10 ma Max., 1 Min.)	1500 VAC (10 ma Max., 1 Min.)	1500 VAC (10 ma Max., 1
Insulation Noise Immunity	10 M(@ 500 VDC 1000 V(p-p) 1µs pulse	10(@ 500 VDC 1200 V(p-p) 1µs pulse	10 M(@ 500 VDC 1000 V(p-p) 1µs pulse	10 M(@ 500 VDC 1000 V(p-p) 1µs pulse	10 M(@ 500 VDC 1000 V(p-p) 1µs pulse
Environmental	0 to 50° C	0 to 45° C	0 to 45° C	0 to 45° C	0 to 45° C
Operating Temperature	0 to 50° C	0 to 45° C	0 to 45° C	0 to 45° C	0 to 45° C
Storage Temperature	-10 to 60° C	-10 to 60° C	-10 to 60° C	-10 to 60° C	-10 to 60° C
Operating Humidity	20 TO 85% rh Non-Condensing	30 to 85% RH Non-Condensing	30 to 85% RH Non-Condensing	30 to 85% RH Non-Condensing	30 to 85% RH Non-Condensing
Storage Humidity	5 to 85% RH Non-Condensing	5 to 85% RH Non-Condensing	5 to 85% RH Non-Condensing	5 to 85% RH Non-Condensing	5 to 85% RH Non-Condensing
Vibration	10 to 25 Hz, 2G on each of X, Y, Z 30 min.	10 to 25 Hz 2G on each of X, Y, Z 30 min.	10 to 25 Hz, 2G on each of X, Y, Z 30 min.	10 to 25 Hz, 2G on each of X, Y, Z 30 min.	10 to 25 Hz, 2G on each of X, Y, Z 30 min.
Mechanical	10.8" H x 8.5" W x 1.93" D	9.57" H x 12.48" W x 3.05" D	12.48" H x 9.57" W x 3.05" D	12.48" H x 9.57" W x 3.05" D	10.70" H x 13.62" W x 4.45" D
Weight	4 lbs.	6.6 lbs.	7 lbs.	7 lbs.	8.4 lbs.
Cooling	Natural Air Convection	Natural Air Convection	Natural Air Convection	Natural Air Convection	Natural Air Convection
Installation	Front Mount	Front Mount	Front Mount	Front Mount	Front Mount
Display	Electroluminescent	LCD Monochrome	STN LCD	TFT LCD	TFT LCD
Display Type	Electroluminescent	LCD Monochrome	STN LCD	TFT LCD	TFT LCD
Pixel Resolution	400 H x 640 W	640 H x 480 W	480 H x 640 W	480 H x 640 W	600 H x 800 W
Colors	Amber + Flash	White/Black + Flash	8 Solid + 8 Flash	8 Solid + 8 Flash	8 Solid + 8 Flash
Viewing Area	7.625" W x 4.875" H 9" Diagonal	8.48" W x 6.32" H 10.5" Diagonal	7.625" W x 5.75" H 10.5" Diagonal	7.625" W x 5.75" H 10.5" Diagonal	9.8" W x 7.35" H 12.1" Diagonal
Touch Panel	15 W x 11 H	31 W x 19 H	31 W x 23 H	31 W x 23 H	39 W x 29 H
Resolution	15 W x 11 H	31 W x 19 H	31 W x 23 H	31 W x 23 H	39 W x 29 H
External Interface					
Serial Port (SIO)	Yes	Yes	Yes	Yes	Yes
Download Port	Yes	Yes	Yes	Yes	Yes
Optional Interfaces					
A-B Remote I/O	QPI-ABR-201	QPI-ABR-201	QPI-ABR-201	QPI-ABR-201	QPI-ABR-201
A-B DH Plus	QPI-ABD-201	QPI-ABD-201	QPI-ABD-201	QPI-ABD-201	QPI-ABD-201
Modbus Plus	QPI-MBP-201	QPI-MBP-201	QPI-MBP-201	QPI-MBP-201	QPI-MBP-201
Genius I/O	QPI-GEG-201	QPI-GEG-201	QPI-GEG-201	QPI-GEG-201	QPI-GEG-201
Profibus	QPI-PBS-201	QPI-PBS-201	QPI-PBS-201	QPI-PBS-201	QPI-PBS-201
DeviceNet	QPI-DVN-202	QPI-DVN-202	QPI-DVN-202	QPI-DVN-202	QPI-DVN-202
Interbus-S	QPI-IBS-201	QPI-IBS-201	QPI-IBS-201	QPI-IBS-201	QPI-IBS-201

QUICKPANEL - LARGE UNITS

QuickPanel Video Specifications

Power Supply	85 to 132 VAC 50/60 Hz @ 50VA max.
Display	10.5" Color TFT 8.48"W x 6.32"H x 10.5" diag.
Touch Screen	Analog resistive
Resolution	640 x 480 screen resolution, 32 x 24 touch panel resolution
Temperature	Operating: 0 - 45°C, -10 - 60°C storage
Humidity	30 - 85% non-condensing
Dimensions	9.75"H x 12.48"W x 3.05"D 243mmH x 317mmH x 317mmW x 85mmD
Weight	6.6lbs (3kg)

ACCESSORIES

Catalog Number	Description
HMI-AGO-201	Anti-glare overlay for 9" display (5 per pack)
HMI-AGO-202	Anti-glare overlay for 10.5" display (5 per pack)
HMI-BEZ-202	Stainless Steel NEMA 4X Bezel for 9" EL QPI-2xxxx-Exx
HMI-BEZ-203	Stainless Steel NEMA 4X Bezel for 10.5" Color STN QPI-2xxxx-Sxx, TFT QPI-2xxxx-Cxx, or QPI-2xxxxx-Lxx
HMI-BEZ-205	Stainless Steel NEMA 4X Bezel for 12.1" Color QPL-2xxxx-xxx
HMI-COV-201	Front sheet cover for 9" EL QPI-2xxxx-Exx (10 per pack)
HMI-COV-202	Front sheet cover for 10.5" Color STN QPI-2xxxx-Sxx, TFT QPI-2xxxx-Cxx or LCD QPI-2xxxx-Lxx (10 per pack)
HMI-COV-205	Front sheet cover for 12.1" Color QPL-2xxxx-xxx (10 per pack)
HMI-CCT-201	Replacement Cold Cathode Backlight Tube for 10.5 Color STN QPI-2xxxx-Sxx or TFT QPI-2xxxx-Cxx
HMI-CCT-205	Replacement Cold Cathode Backlight Tube for 12.1" Color QPL-2xxxx-C2P
510-1000-041	24 VDC, 2Amp power supply, enclosed design for desktop with on/off switch for QPI-xDxxx-xxx units.

All software and accessories are subject to schedule E.
CE marked units available upon request. Please consult factory.

HOW TO ORDER

QUICKPANEL Unit

Catalog Number	Description
QPI-21100-E2P	9" Monochrome EL for standard serial PLC drivers, 120VAC
QPI-21100-S2P	10.5" STN Color LCD for standard serial PLC drivers, 120VAC
QPI-21100-C2P	10.5" TFT Color for standard serial PLC drivers, 120VAC
QPL-21100-C2P	12.1" TFT Color for standard serial PLC drivers, 120VAC
QPI-2D100-L2P	10.5" Monochrome LCD for standard serial PLC drivers, 24VDC ^{UL}
QPI-2D100-E2P	9" Monochrome EL for standard serial PLC drivers, 24VDC ^{UL}
QPI-2D100-S2P	10.5" STN Color LCD for standard serial PLC drivers, 24VDC ^{UL}
QPI-2D100-C2P	10.5" TFT Color for standard serial PLC drivers, 24VDC ^{UL}
QPL-2D200-C2P	12.1" TFT Color for standard serial PLC drivers, 24VDC ^{UL}

QUICKPANEL Communication Modules (for all QPI & QPL units)

Catalog Number	Description
QPI-ABD-201	A-B Data Highway Plus interface module ^{UL}
QPI-ABR-201	A-B 1771 Remote I/O interface module ^{UL}
QPI-GEG-201	General Electric Genius I/O interface module ^{UL}
QPI-MBP-201	Modicon Modbus Plus interface module ^{UL}
QPI-PBS-201	Profibus Interface Module
QPI-DVN-202	DeviceNet Interface Module
QPI-IBS-201	Interbus-S Interface Module

QUICKPANEL Video Unit

Catalog Number	Description
QPI-211V0-C2P	10.5" TFT Color for standard serial PLC drivers, 120VAC with 3 NTSC video inputs

QUICKSTART Kits - Everything you need for your first project!

A 10.5" or 9" QuickPanel
QuickDesigner for WindowsTM off-line editor ⁴
Full Documentation
Download Cable
120 VAC Line Cord (for 9"EL and 10.5"STN) or
24VDC, 2Amp Power Supply (for 10.5" LCD)

PLC cables included:

HMI-CAB-C53	HMI-CAB-C82
HMI-CAB-C58	HMI-CAB-C83

Catalog Number Description

QSI-2D100-L2P	10.5" Monochrome LCD for standard serial PLC drivers, 24VDC
QSI-21100-E2P	9" Monochrome EL for standard serial PLC drivers, 120VAC
QSI-21100-S2P	10.5" STN Color LCD for standard serial PLC drivers, 120VAC
QSL-21100-C2P	12.1" TFT Color for standard serial PLC drivers, 120VAC

⁴ - For PLC driver availability, refer to the QuickDesigner Software section.